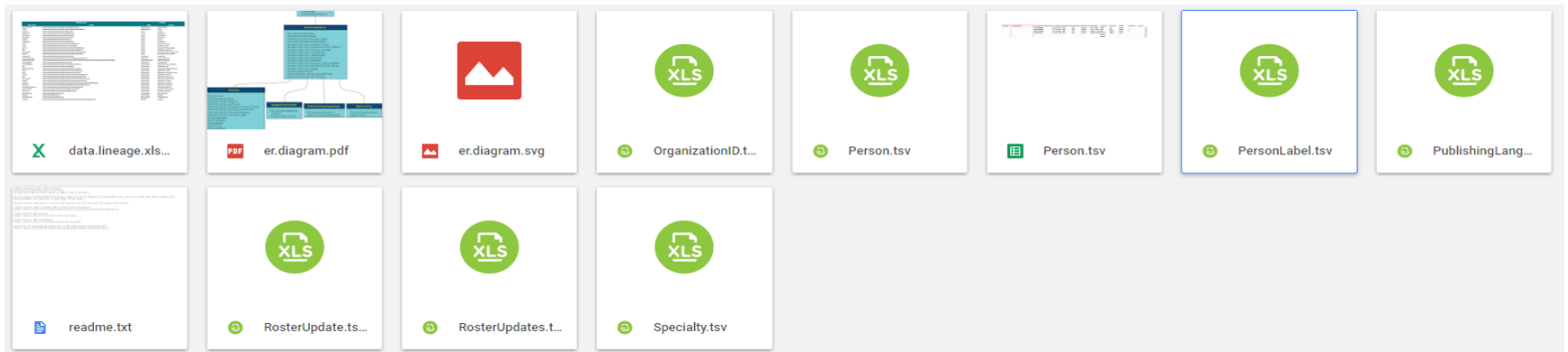


# Sonra – The Data Liberation Company

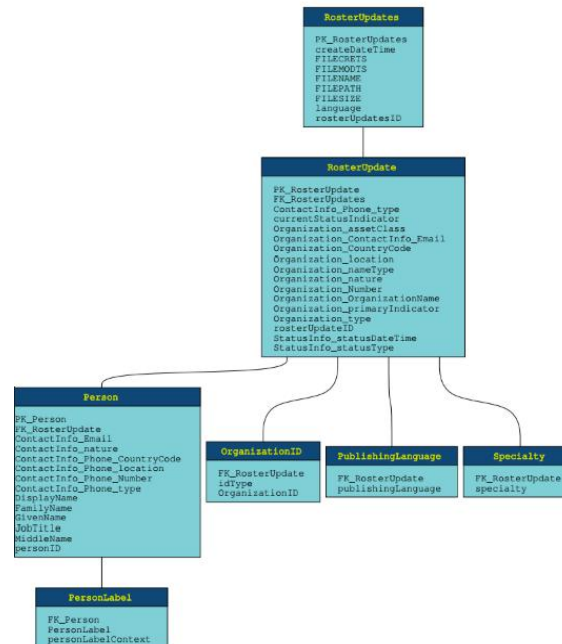
---

The free version of Flexter generates text files as output



# Sonra – The Data Liberation Company

## 1. ER Diagram – Illustrate the logical structure of the target schema



# Sonra – The Data Liberation Company

## 2. Tab Separated Value Files (TSV) – These files contain your data

PK_Person	FK_RosterUpdate	ContactInfo_Email	ContactInfo_Phone	ContactInfo_Phone	ContactInfo_Phone	ContactInfo_Phone	ContactInfo_Phone	ContactInfo_Natural	DisplayName	FamilyName	GivenName	JobTitle	MiddleName	personID
1	1	eric.walker@fictf	1	(212) 555-1001	Office	Voice	Business		Eric J. Walker	Walker	Eric	Analyst	J.	127
2	1	greg.green@fictf	1	(212) 555-1002	Office	Voice	Business		Greg T. Green	Green	Greg	Analyst	T.	128
3	1	matthew.smith@	1	(212) 555-1003	Office	Voice	Business		Matthew J. Smith	Smith	Matthew	Analyst	J.	453
4	2	william.fitzpatrick	1	(212) 555-1002	Office	Voice	Business		William Fitzpatrick	Fitzpatrick	William	Analyst		316
5	3									Foreman				926
6	3									Newman				453

FK_Person	PersonLabel	personLabelContext
1	EW1001	ResearchVendor123
1	WAL-ER782	MarketDataCorp456
2	GG1012	ResearchVendor123
2	GRE-GR113	MarketDataCorp456
3	MS1427	ResearchVendor123
3	SMI-MA443	MarketDataCorp456
4	WF8772	ResearchVendor123
4	FIT-WI901	MarketDataCorp456

# Sonra – The Data Liberation Company

## 3. Data Lineage.xlsx file – Source to Target Map. Maps XML elements to target table attributes

XML name	XML (source) XPath	TARGET			
		table	column		
OrganizationID	/RosterUpdates/RosterUpdate/Organization/OrganizationID	OrganizationID	OrganizationID		
idType	/RosterUpdates/RosterUpdate/Organization/OrganizationID/@idType	OrganizationID	idType		
personID	/RosterUpdates/RosterUpdate/Person/@personID	Person	personID		
DisplayName	/RosterUpdates/RosterUpdate/Person/DisplayName	Person	DisplayName		
FamilyName	/RosterUpdates/RosterUpdate/Person/FamilyName	Person	FamilyName		
GivenName	/RosterUpdates/RosterUpdate/Person/GivenName	Person	GivenName		
JobTitle	/RosterUpdates/RosterUpdate/Person/JobTitle	Person	JobTitle		
MiddleName	/RosterUpdates/RosterUpdate/Person/MiddleName	Person	MiddleName		
nature	/RosterUpdates/RosterUpdate/Person/ContactInfo/@nature	Person	ContactInfo_nature		
Email	/RosterUpdates/RosterUpdate/Person/ContactInfo/Email	Person	ContactInfo_Email		
location	/RosterUpdates/RosterUpdate/Person/ContactInfo/Phone/@location	Person	ContactInfo_Phone_location		
type	/RosterUpdates/RosterUpdate/Person/ContactInfo/Phone/@type	Person	ContactInfo_Phone_type		
CountryCode	/RosterUpdates/RosterUpdate/Person/ContactInfo/Phone/CountryCode	Person	ContactInfo_Phone_CountryCode		
Number	/RosterUpdates/RosterUpdate/Person/ContactInfo/Phone/Number	Person	ContactInfo_Phone_Number		
PersonLabel	/RosterUpdates/RosterUpdate/Person/PersonLabel	PersonLabel	PersonLabel		
personLabelContext	/RosterUpdates/RosterUpdate/Person/PersonLabel/@personLabelContext	PersonLabel	personLabelContext		
publishingLanguage	/RosterUpdates/RosterUpdate/Organization/Expertise/PublishingLanguages/PublishingLanguage/@publishingLanguage	PublishingLanguage	publishingLanguage		
rosterUpdateID	/RosterUpdates/RosterUpdate/@rosterUpdateID	RosterUpdate	rosterUpdateID		
primaryIndicator	/RosterUpdates/RosterUpdate/Organization/@primaryIndicator	RosterUpdate	Organization_primaryIndicator		
type	/RosterUpdates/RosterUpdate/Organization/@type	RosterUpdate	Organization_type		
OrganizationName	/RosterUpdates/RosterUpdate/Organization/OrganizationName	RosterUpdate	Organization_OrganizationName		
nature	/RosterUpdates/RosterUpdate/Organization/ContactInfo/@nature	RosterUpdate	Organization_nature		
Email	/RosterUpdates/RosterUpdate/Organization/ContactInfo/Email	RosterUpdate	Organization_ContactInfo_Email		
location	/RosterUpdates/RosterUpdate/Organization/ContactInfo/Phone/@location	RosterUpdate	Organization_location		
type	/RosterUpdates/RosterUpdate/Organization/ContactInfo/Phone/@type	RosterUpdate	ContactInfo_Phone_type		
CountryCode	/RosterUpdates/RosterUpdate/Organization/ContactInfo/Phone/CountryCode	RosterUpdate	Organization_CountryCode		
Number	/RosterUpdates/RosterUpdate/Organization/ContactInfo/Phone/Number	RosterUpdate	Organization_Number		
assetClass	/RosterUpdates/RosterUpdate/Organization/Expertise/AssetClasses/AssetClass/@assetClass	RosterUpdate	Organization_assetClass		
nameType	/RosterUpdates/RosterUpdate/Organization/OrganizationName/@nameType	RosterUpdate	Organization_nameType		
currentStatusIndicator	/RosterUpdates/RosterUpdate/StatusInfo/@currentStatusIndicator	RosterUpdate	currentStatusIndicator		
statusDateTime	/RosterUpdates/RosterUpdate/StatusInfo/@statusDateTime	RosterUpdate	StatusInfo_statusDateTime		
statusType	/RosterUpdates/RosterUpdate/StatusInfo/@statusType	RosterUpdate	StatusInfo_statusType		
createDateTime	/RosterUpdates/@createDateTime	RosterUpdates	createDateTime		
language	/RosterUpdates/@language	RosterUpdates	language		
rosterUpdateID	/RosterUpdates/@rosterUpdateID	RosterUpdates	rosterUpdateID		

# Sonra – The Data Liberation Company

---

We have various resources on our blog that show how you can work with the output from Flexter

- Convert ACORD Insurance XML to Talend Data Preparation <https://sonra.io/2017/07/11/video-convert-acord-insurance-xml-talend-data-preparation/>
- Convert XML to Excel <https://sonra.io/2017/07/11/video-convert-xml-excel/>
- Convert XML to Trifacta <https://sonra.io/2017/07/05/video-convert-xml-trifacta/>
- Converting and Analysing EU Tender data in XML with Flexter and Dataiku DSS <https://sonra.io/2017/06/09/converting-analysing-xml-tenders-electronic-daily/>

sonra

[WWW.SONRA.IO](http://WWW.SONRA.IO)